



Leon County
Public Works Department
Engineering Services Division
"People Focused. Performance Driven."

Woodville Rural Community Septic to Sewer Conversion Project

Construction Details

Consultant

- Talcon Group, LLC

Progress

- 100% Design Plan for Phase 1A, 90% Design Plan for Phase 1B, 90% Design complete for Phase 1C-1 and Phase 1C-2

Cost

- \$14,453,759.00

Project Schedule

Estimated construction start for Phase 1A - Summer (June) 2023

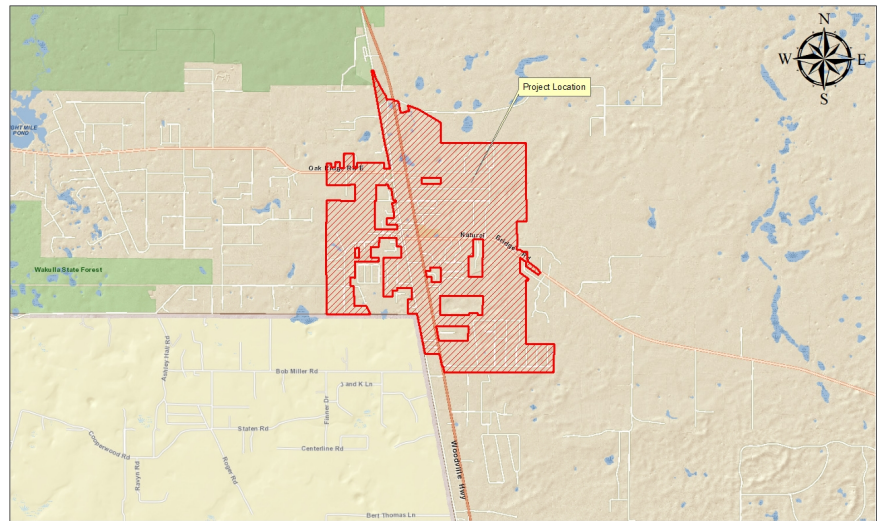
Estimated construction start for Phase 1B - Fall (December) 2024

Estimated construction start for Phase 1C-1 - Spring 2025 - (pending on ROW/Easement Acquisition)

Estimated construction start for Phase 1C-2 - Winter 2025 - (pending on ROW/Easement Acquisition)

Contact Information

Samuel Ijeoma, P.E.
Project Manager
2280 Miccosukee Road
Email: ijeomao@leoncountyfl.gov
Phone: (850)606-1563
Fax: (850)606-1501



Project Description

Property owners in the Woodville Rural Community will benefit from a partially state grant-funded septic-to-sewer conversion project. Leon County has been investing millions of dollars in the Primary Springs Protection Zone to help improve water quality by transitioning over a thousand septic tanks to central sewer.

Project Website

Proposed Improvements

Construction of a master pump station and associated force main to convey sanitary sewage to the City collection system;

Construction of central sanitary sewer collection system

Construction of secondary pump stations and associated force mains to convey sanitary sewage to the master pump station;

Connection of residences and businesses to the central sanitary collection system;

Abandonment of septic tanks.



Leon County
Public Works Department
Engineering Services Division
"People Focused. Performance Driven."

Woodville Rural Community Septic to Sewer Conversion Project

Felton Ard, P.E.
Customer Support Engineer
2280 Miccosukee Road
Email: ArdF@leoncountyfl.gov
Phone: (850)606-1515
Fax: (850)606-1501