



Leon County
Public Works Department
Engineering Services Division
"People Focused. Performance Driven."

Chaires Full Size (60/90) Baseball Field

Project Details

Consultant
• DRMP

Progress
• Preparing Bid Set for Advertising

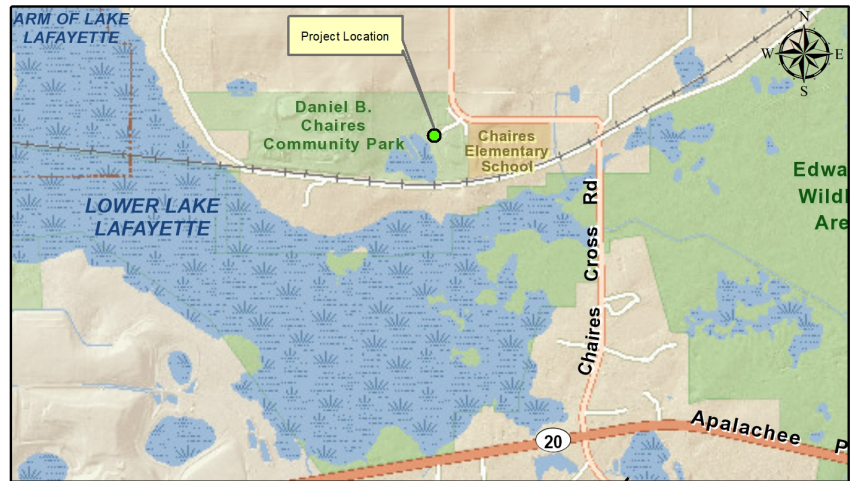
Cost
•

Project Schedule

Contact Information

Kimberly Wood, P.E.
Project Manager
2280 Miccosukee Road
Tallahassee, FL 32308
Email: WoodK@leoncountyfl.gov
Phone: (850) 606-1545
Fax: (850) 606-1501

Felton Ard, P.E.
Customer Support Engineer
2280 Miccosukee Road
Tallahassee, FL 32308
Email: ArdF@leoncountyfl.gov
Phone: (850) 606-1515
Fax: (850) 606-1501



Project Description

With community input, a need for an additional regulationsize 60/90 baseball field for Countyinventory has been identified. The Daniel B. Chaires Park offered the opportunity to add such a field on land already owned by Leon County. However due to the escalation of construction costs the project which originally had concession and bathroom buildings, seating terraces, concrete, dugouts, a looproad, etc. had to scaled back to reduce costs and yet provide the needs of the community. The project will require amendments to both the approved site plan and Environmental Permit.

Proposed Improvements

The project will include a full size (60/90) field with dugouts, bull pens, batting cages and bleachers. Access to the field will be through a new connection to Chaires Cross Road. The project will also include paved parking area, landscaping, sidewalks, and drainage improvements to ensure stormwater treatment.