



Leon County
Public Works Department
Engineering Services Division
"People Focused. Performance Driven."

Killearn Lakes Greenway Trail

Design Details

Consultant

- Registe Sliger, Inc

Progress

- material selection as oyster shell may not be available.

Cost

-

Project Schedule

Contact Information

Kimberly Wood, P.E.

Project Manager

2280 Miccosukee Road

Tallahassee, FL 32308

Email: WoodK@leoncountyfl.gov

Phone: (850) 606-1545

Fax: (850) 606-1501

Felton Ard, P.E.

Customer Support Engineer

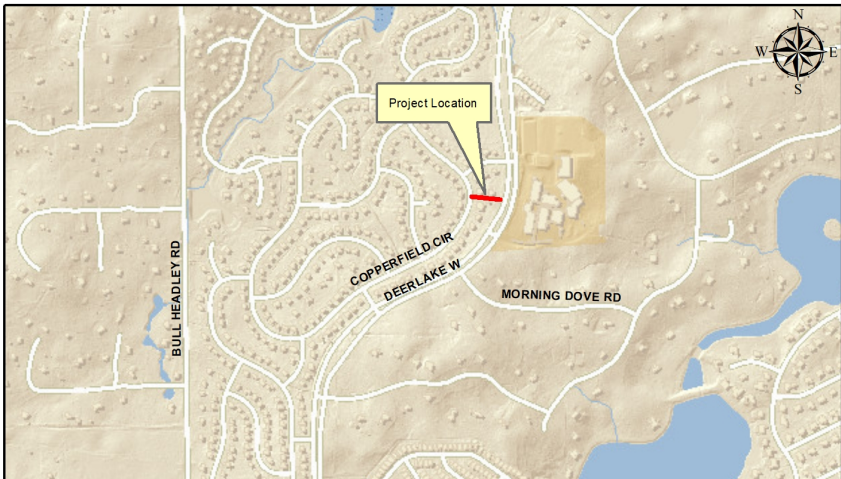
2280 Miccosukee Road

Tallahassee, FL 32308

Email: ArdF@leoncountyfl.gov

Phone: (850) 606-1515

Fax: (850) 606-1501



Project Description

The Safe Routes to School listed the construction of a trail in Killearn Lakes Plantation between Copperfield Circle and Deer Lake Road (adjacent to Deer Lake Middle School). The area middle school children have been cutting through the green-space between 1777 & 1773 Copperfield Circle as a short cut to school. An area resident built a walking trail out of landscape timbers and mulch. However the County is working with the Homeowners Association on obtaining an easement and then build a more stable trail out of oyster shell or limerock tailings.

Proposed Improvements

Oyster shell or similar material trail approximately 6 feet wide