



**Leon County**  
**Public Works Department**  
**Engineering Services Division**  
*"People Focused. Performance Driven."*

## Gearhart Road Sidewalk from CSX Railroad to Capital Circle

### Design Details

Consultant  
• DRMP

Progress  
• permitting

Cost  
• \$49,447.43

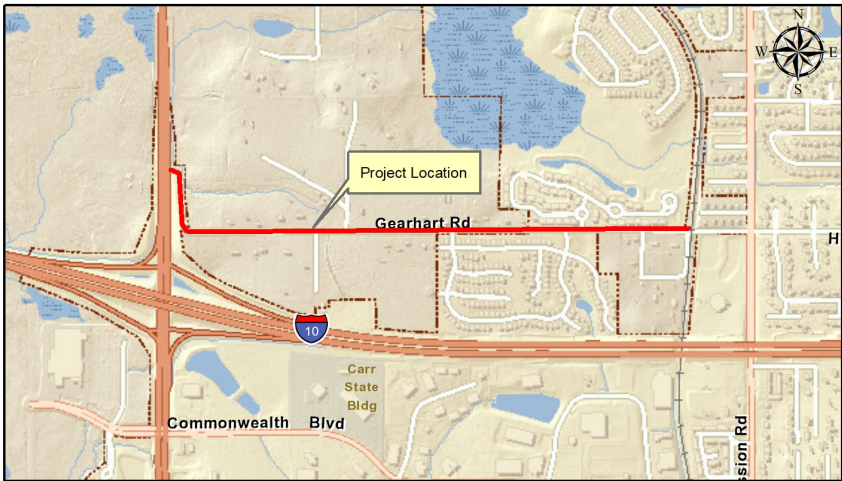
### Project Schedule

Construction planned to begin late  
Summer of 2019

### Contact Information

Kimberly Wood, P.E.  
Project Manager  
2280 Miccosukee Road  
Tallahassee, FL 32308  
Email: [WoodK@leoncountyfl.gov](mailto:WoodK@leoncountyfl.gov)  
Phone: (850) 606-1545  
Fax: (850) 606-1501

Felton Ard, P.E.  
Customer Support Engineer  
2280 Miccosukee Road  
Tallahassee, FL 32308  
Email: [ArdF@leoncountyfl.gov](mailto:ArdF@leoncountyfl.gov)  
Phone: (850) 606-1515  
Fax: (850) 606-1501



### Project Description

Installation of a sidewalk along Gearhart Road from Capital Circle to Mission Road. Sidewalk has been installed from Mission Road through the CSX Railroad. The remaining sidewalk section is currently in permitting. Sidewalk will be installed along the south and west side of Gearhart Road

### Proposed Improvements

Improvements include adding a 5 to 6 foot sidewalk along the roadway and includes minor drainage improvements, including but not limited to curb and gutter and curb inlets.