



**Leon County**  
**Public Works Department**  
**Engineering Services Division**  
*"People Focused. Performance Driven."*

## Pedrick Pond Littoral Planting

### **Project Details**

Consultant

- Persica Landscaping

Progress

- Underway

Cost

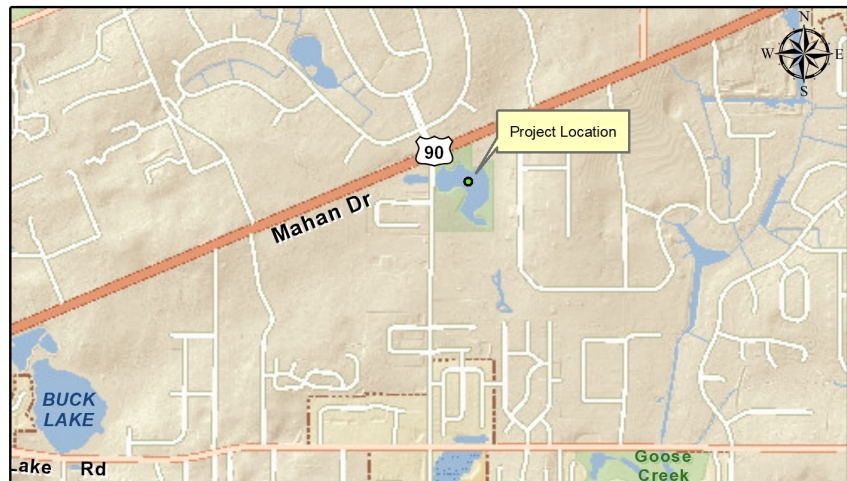
- \$20,000.00

### **Project Schedule**

### **Contact Information**

Theresa Heiker, P.E.  
Project Manager  
2280 Miccosukee Road  
Tallahassee, FL 32308  
Email: [HeikerT@leoncountyfl.gov](mailto:HeikerT@leoncountyfl.gov)  
Phone: (850) 606-1526  
Fax: (850) 606-1501

Felton Ard, P.E.  
Customer Support Engineer  
2280 Miccosukee Road  
Tallahassee, FL 32308  
Email: [ArdF@leoncountyfl.gov](mailto:ArdF@leoncountyfl.gov)  
Phone: (850) 606-1515  
Fax: (850) 606-1501



### **Project Description**

The project is located at the Pedrick Pond, at the intersection of Pedrick Road and Mahan Drive. The stormwater facility permit required the placement of wetland plants around the pond perimeter.

### **Proposed Improvements**

Wetland trees, shrubs and herbaceous plants will be placed around the water's edge to assist in the treatment of stormwater runoff at the facility.