



Leon County
Public Works Department
Engineering Services Division
"People Focused. Performance Driven."

Smith Creek Bike Lanes

Design Details

Consultant

- TBD

Progress

- Design Consultant Selection

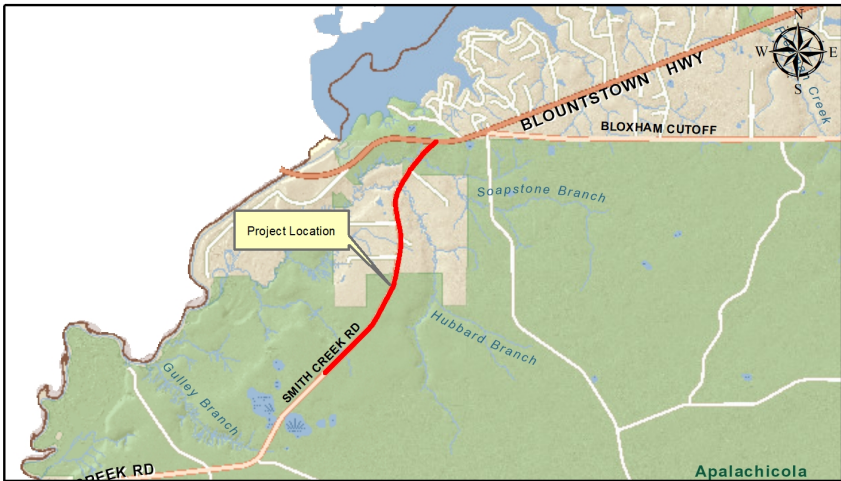
Cost

-

Project Schedule

Contact Information

Felton Ard, P.E.
Project Manager
2280 Miccosukee Road
Tallahassee, FL 32308
Email: ArdF@leoncountyfl.gov
Phone: (850) 606-1515
Fax: (850) 606-1501



Project Description

The purpose of the project is to construct two five foot wide bicycle lanes to Smith Creek Road (CR 375). The length of the project is 2.3 miles and will enhance and promote the safe use of non-motorized transportation alternatives to access the Apalachicola National Forest

Proposed Improvements