



Leon County
Public Works Department
Engineering Services Division
"People Focused. Performance Driven."

Natural Bridge Road Sidewalk Project

Project Details

Consultant

- Atkins, Inc.

Progress

- Completed

Cost

- \$306,000.00

Project Schedule

Completed

Contact Information

Chris Muehlemann, P.E.

Project Manager

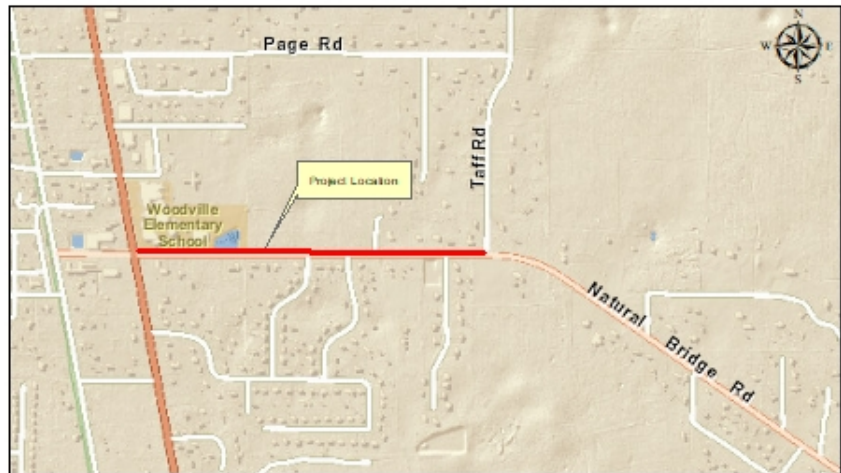
2280 Miccosukee Road

Email:

Muehlemannc@leoncountyfl.gov

Phone: (850) 606-1536

Fax: (850) 606-1501



Project Description

Sidewalk on Natural Bridge Road from Woodville Highway to Taff Road on the north side of Natural Bridge Road

Proposed Improvements

5 & 6 foot Sidewalk with Curb and Gutter. Due to environmental constraints it is proposed to use a highly porous material for the sidewalk construction.

[my pic](#)

[Agenda Cover Page](#)