



Leon County
Public Works Department
Engineering Services Division
"People Focused. Performance Driven."

Tram Rd - Crossing Rocks Rd to Capital Circle SE

Design Details

Consultant

- Inovia Group, Inc.

Progress

- 90% Plans

Cost

- \$131,575.13

Project Schedule

Current: Design

Future: Funding & Construction

Contact Information

Justin Kinsley, P.E.

Project Manager

2280 Miccosukee Road

Tallahassee, FL 32308

Email: KinsleyJ@leoncountyfl.gov

Phone: (850) 606-1528

Fax: (850) 606-1501

Felton Ard, P.E.

Customer Support Engineer

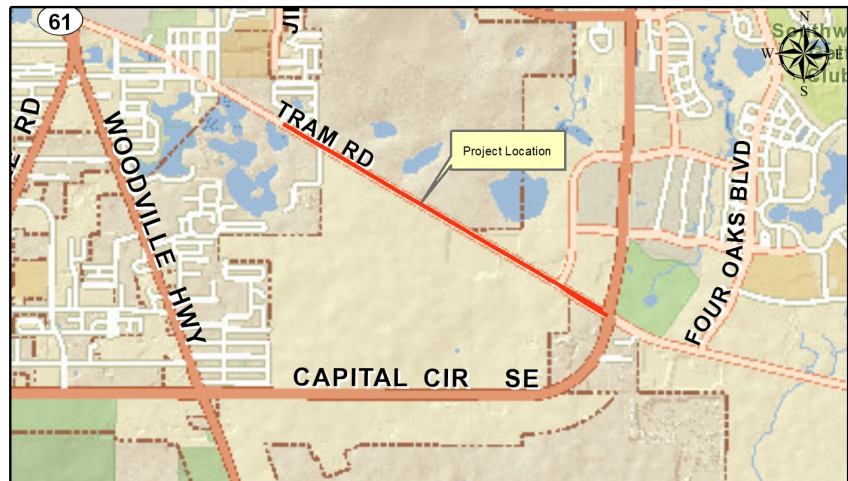
2280 Miccosukee Road

Tallahassee, FL 32308

Email: ArdF@leoncountyfl.gov

Phone: (850) 606-1515

Fax: (850) 606-1501



Project Description

The proposed improvements will include the construction of a 10-foot asphalt multi-use trail along the north side of Tram Road between Crossing Rocks Road and Capital Circle SE.

The improvements lie within three closed basins (Fairview MS CB, Tram Rd CB, and Wild Dog CB) The predominant soils within the project limits are Kershaw Sand, Lakeland Sand, and Ortega Sand.

Proposed Improvements