



**Leon County**  
**Public Works Department**  
**Engineering Services Division**  
*"People Focused. Performance Driven."*

## Centerville Road Turn Lane Addition at Harpers Ferry

### Design Details

Consultant

- CDM Smith, Inc.

Progress

- 100% Design

Cost

- 

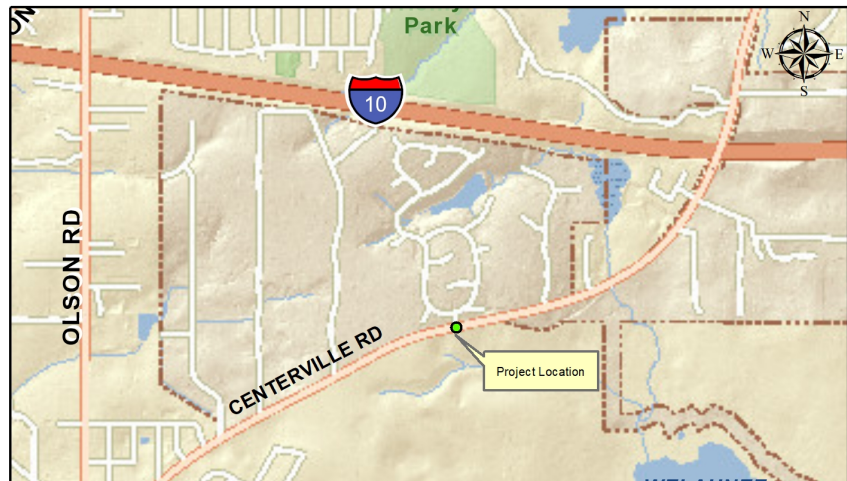
### Project Schedule

**Current:** Easement Acquisition

**Future:** Construction in Q4

### Contact Information

Felton Ard, P.E.  
Project Manager  
2280 Miccosukee Road  
Tallahassee, FL 32308  
Email: [ArdF@leoncountyfl.gov](mailto:ArdF@leoncountyfl.gov)  
Phone: (850) 606-1515  
Fax: (850) 606-1501



### Project Description

The project consists of the construction of a dedicated left turn lane on Centerville Road at Harpers Ferry Drive to provide for safer turning movements, increased thru traffic movement capacity, and reduce vehicle crashes at the intersection

### Proposed Improvements

- Eastbound left turn-lane
- Asphalt resurfacing
- Drainage improvements