



**Leon County**  
**Public Works Department**  
**Engineering Services Division**  
*"People Focused. Performance Driven."*

# Tram Road St. Marks River Cross Drain Replacement

## Project Details

### Consultant

- CDM Smith

### Progress

- 

### Cost

- \$930,000.00

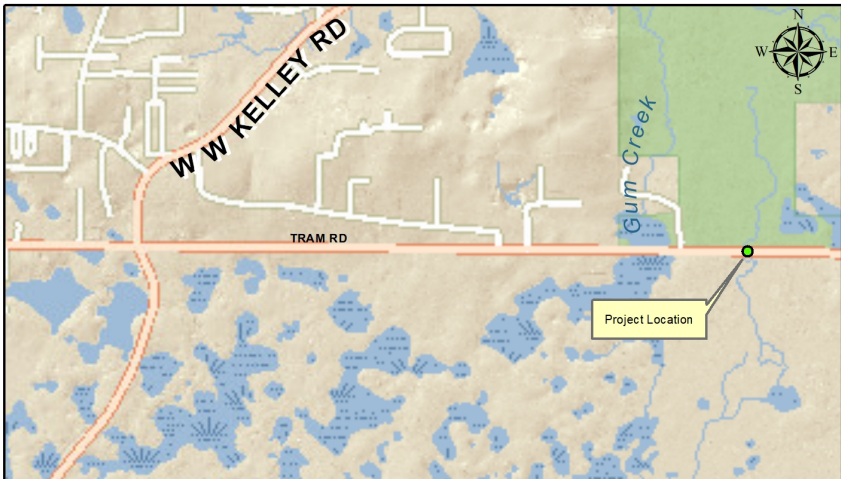
## Project Schedule

Construction Bid will be advertised shortly.

## Contact Information

S. George Su, P.E.  
Project Manager  
2280 Miccosukee Road  
Tallahassee, FL 32308  
Email: [SuShin@leoncountyfl.gov](mailto:SuShin@leoncountyfl.gov)  
Phone: (850) 606-1544  
Fax: (850) 606-1501

Felton Ard, P.E.  
Customer Support Engineer  
2280 Miccosukee Road  
Tallahassee, FL 32308  
Email: [ArdF@leoncountyfl.gov](mailto:ArdF@leoncountyfl.gov)  
Phone: (850) 606-1515  
Fax: (850) 606-1501



## Project Description

Replace existing system of corrugated metal pipes (CMP) with an equivalent system using concrete box culverts.

The system of ten (10) CMP's are showing signs of advanced deterioration of the metal pipe and concrete end protection resulting in increased maintenance and safety issues. The proposed culvert replacement with concrete box culverts will insure along lasting crossdrain system to this vital roadway.

## Proposed Improvements

- Improved crossdrain system
- Stabilized shoulder at crossdrains
- Guardrail protection system

The proposed improvements include a triple 8-foot by 4-foot concrete box culvert with an upstream flowline of Elevation 27.8 feet and matching the existing roadway profile.