



**Leon County**  
**Public Works Department**  
**Engineering Services Division**  
*"People Focused. Performance Driven."*

## Baum Road Drainage Improvement

### Design Details

Consultant

- Moore Bass

Progress

- 90% Design

Cost

- 

### Project Schedule

### Contact Information

Chris Muehlemann, P.E.

Project Manager

2280 Miccosukee Road

Tallahassee, FL 32308

Email:

[Muehlemann@leoncountyfl.gov](mailto:Muehlemann@leoncountyfl.gov)

Phone: (850) 606-1536

Fax: (850) 606-1501

Felton Ard, P.E.

Customer Support Engineer

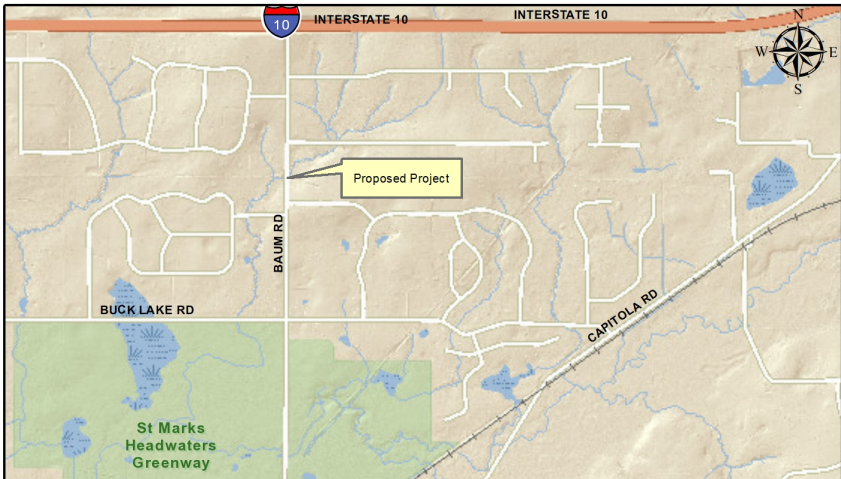
2280 Miccosukee Road

Tallahassee, FL 32308

Email: [Ardf@leoncountyfl.gov](mailto:Ardf@leoncountyfl.gov)

Phone: (850) 606-1515

Fax: (850) 606-1501



### Project Description

This project is for drainage improvements and wetland mitigation to reduce the flooding of Baum Road and associated stream erosion.

This project is proposed in three stages that include:

- (1) A feasibility study with community input.
- (2) Design and permitting
- (3) Construction

### Proposed Improvements

The drainage way through Winfield Forest subdivision remained natural during the subdivision development. Uphill development north of Winfield Forest on both sides of Baum Road, including I-10, generates increased flows, which overwhelm the Baum Road cross-drain during heavy storms. The feasibility analysis will identify drainage structural improvements from Buck Lake Road north through Winfield Forest and Baum Road. Associated wetland mitigation requirements will be determined.

Improving the conveyance will allow compliance with Stormwater Management Policy 1.5.2: No floodwater in the driving lanes of any roadways for a 5-year storm.



**Leon County**  
**Public Works Department**  
**Engineering Services Division**  
*"People Focused. Performance Driven."*

## Baum Road Drainage Improvement

--	--