



**Leon County**  
**Public Works Department**  
**Engineering Services Division**  
*"People Focused. Performance Driven."*

## St. Marks Headwaters Greenway, Phase II

### Design Details

Consultant

- Ebstone, Inc.

Progress

- 90% Plans

Cost

- 

### Project Schedule

April 8, 2021 - Virtual Stakeholders Meeting

[PowerPoint Presentation](#)

[PowerPoint Presentation in PDF](#)

### Contact Information

Chris Muehlemann, P.E.

Project Manager

2280 Miccosukee Road

Tallahassee, FL 32308

Email:

[Muehlemannc@leoncountyfl.gov](mailto:Muehlemannc@leoncountyfl.gov)

Phone: (850) 606-1536

Fax: (850) 606-1501

Felton Ard, P.E.

Customer Support Engineer

2280 Miccosukee Road

Tallahassee, FL 32308

Email: [ArdF@leoncountyfl.gov](mailto:ArdF@leoncountyfl.gov)

Phone: (850) 606-1515

Fax: (850) 606-1501

Maggie Theriot

Director Resource Stewardship

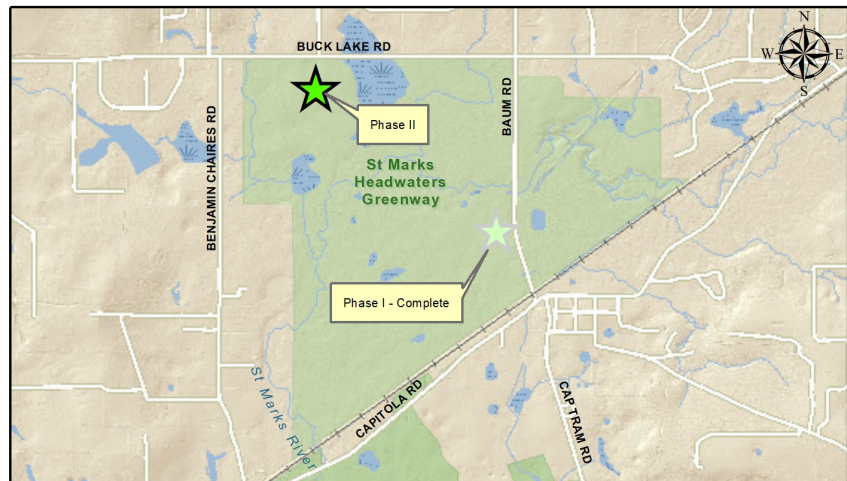
1907 S. Monroe St. Tallahassee,

FL 32301

Email: [TheriotM@leoncountyfl.gov](mailto:TheriotM@leoncountyfl.gov)

Phone: (850) 606-5011

Fax: (850) 606-1471



### Project Description

The proposed improvements for phase II of the St. Marks Headwaters Greenway consists of the large trail head on Buck Lake Road with paved parking, a permanent restroom facility, playground, and trails with three spans of boardwalk and an observation platform. This is a continuation of phase I which constructed a trail head on Baum Road with pervious pavement parking, picnic shelters, information kiosk, horse trailer parking and 3 miles of trails.

### Proposed Improvements

- Paved Parking
- Permanent Restrooms
- 3 - 12'x12' Picnic Pavillions
- 1 - 20'x28' Picnic Pavillion
- Nature-based Playground Area
- Bicycle Skills Coarse
- Bicycle rack & repair station
- Infomational Kiosk
- 6 miles of multi-use trails
- Grassed overflow parking



**Leon County**  
**Public Works Department**  
**Engineering Services Division**  
*"People Focused. Performance Driven."*

## St. Marks Headwaters Greenway, Phase II

--	--