



**Leon County**  
**Public Works Department**  
**Engineering Services Division**  
*"People Focused. Performance Driven."*

# Solid Waste Landfill Closure, Phase I

## Construction Details

Consultant

- Allen Excavation Inc.

Progress

- Completed

Cost

- \$1,273,056.00

## Project Schedule

October 17, 2017

Pre-Construction meeting

October 2017

Project construction  
Commencement

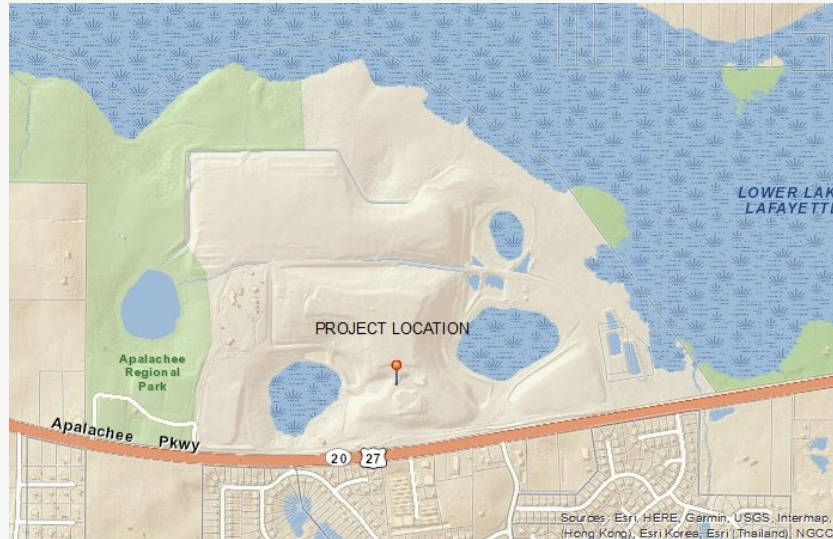
March 2018:

Project completion

## Contact Information

Felton Ard, P.E.  
Customer Support Engineer  
2280 Miccosukee Road,  
Tallahassee Florida 32308  
Email: [ardf@leoncountyfl.gov](mailto:ardf@leoncountyfl.gov)  
Phone: (850) 606-1515  
Fax: (850) 606-1501

Sam Ijeoma, P.E.  
Project Manager  
2280 Miccosukee Road,  
Tallahassee Florida 32308  
Email: [ijeomao@leoncountyfl.gov](mailto:ijeomao@leoncountyfl.gov)  
Phone: (850) 606-1563  
Fax: (850) 606-1501



## Project Description

In July 2015, the Board accepted the status report regarding the closure of the landfill and development of the corresponding long-term master planning of the site for purposes of a regional park. In this report, staff developed a tentative scope and timeline to initiate the closure of the Landfill and begin master planning the Apalachee Regional Park.

Transporting 222,200 cubic yard of shaping materials from the F. A. Ash Borrow Pit (County Borrow Pit) located at 10600 F A Ash Way, Tallahassee, Florida to the Leon County Solid Waste Landfill Closure site located at 7550 Apalachee Parkway, Tallahassee, Florida. T

## Proposed Improvements

Stockpile of Shaping Material for Class I Cell and Class III South cell Landfill Closure



**Leon County**  
**Public Works Department**  
**Engineering Services Division**  
*"People Focused. Performance Driven."*

## Solid Waste Landfill Closure, Phase I

--	--