



**Leon County  
Public Works Department  
Engineering Services Division**  
*"People Focused. Performance Driven."*

## Fred George Basin Greenway

### Construction Details

**Consultant**

- CW Roberts

**Progress**

- complete

**Cost**

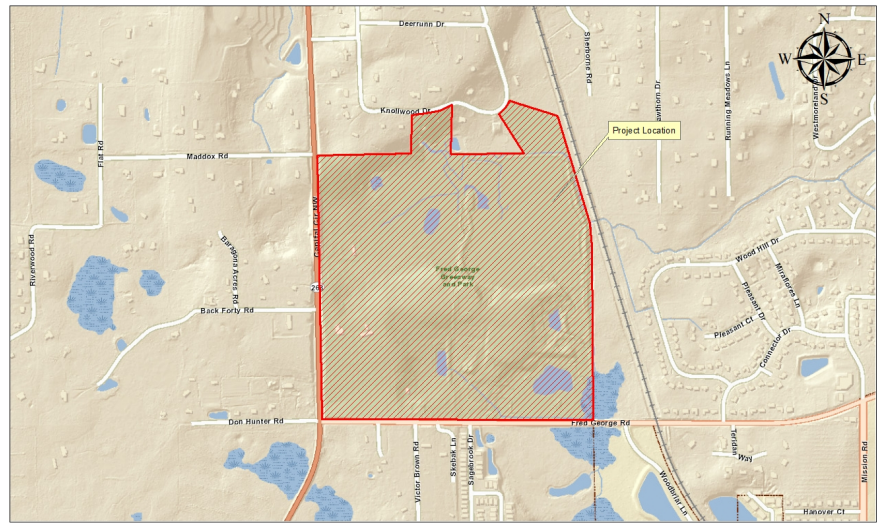
- \$3,690,524.21

### Project Schedule

- Design - Underway
- Permitting - Complete by April 2014.
- Design Plans Finalized and Advertise for Bids Mid April, 2014.
- Award June 2014
- Construction – Summer through Spring 2015
- Operation: Summer 2015

### Contact Information

Leigh Davis  
Leon County Department of Public Works  
2280 Miccosukee Road,  
Tallahassee, FL 32308  
Email: [DavisLe@leoncountyfl.gov](mailto:DavisLe@leoncountyfl.gov)  
Phone: 8506061470  
Fax: 8506061471



### Project Description

- Fred George Greenway acquired through joint FCT, Blueprint 2000, and County funding
- Management Plan Completed in August 2009
- Remaining acquisition funds released from Blueprint 2000 and transferred to the County in April 2012 for construction
- Phase I design complete 2013
- Phase II A design Initiated in August 2013

### Proposed Improvements

- Baseball Field (60/90)
- Multipurpose Field.



**Leon County  
Public Works Department  
Engineering Services Division**  
*"People Focused. Performance Driven."*

## Fred George Basin Greenway

Kim Wood, P.E.  
Leon County Department of Public Works  
2280 Miccosukee Road  
Email: [woodk@leoncountyfl.gov](mailto:woodk@leoncountyfl.gov)  
Phone: (850)606-1545  
Fax: (850)606-1501

- Parking, Concessions, Restrooms
  - Passive Recreation
- Trailhead
- Supporting Infrastructure – Landscaping, Sidewalks, Stormwater Management, Water and Sewer