



Leon County
Public Works Department
Engineering Services Division
"People Focused. Performance Driven."

Okeehoopkee Prairie Park

Project Details

Consultant

- Registe, Sliger Engineering

Progress

-

Cost

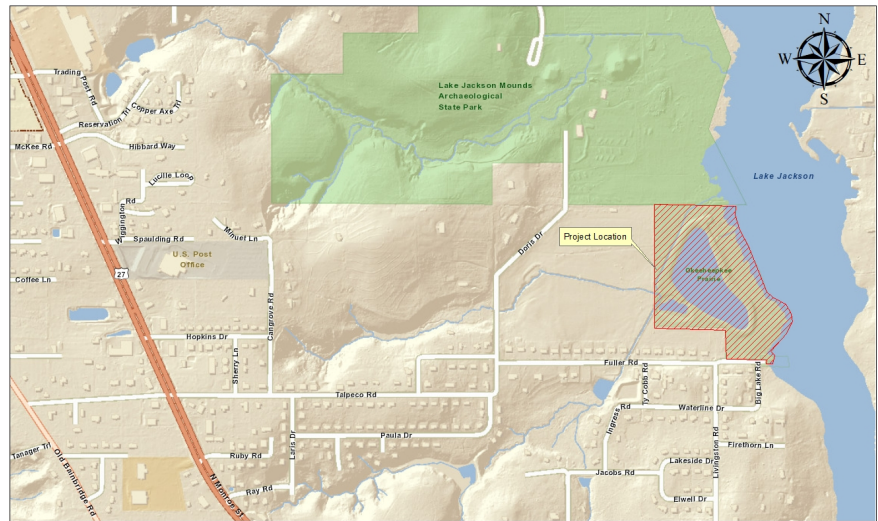
- \$567,150.00

Project Schedule

Contact Information

Felton Ard, P.E.
Leon County Department of Public Works
2280 Miccosukee Road,
Tallahassee, FL 32308
Email: ArdF@leoncountyfl.gov
Phone: 8506061515
Fax: 8506061501

Leigh Davis
Leon County Department of Public Works
2280 Miccosukee Road,
Tallahassee, FL 32308
Email: DavisLe@leoncountyfl.gov
Phone: 85060615151475
Fax: 8506061471



Project Description

The property is located on the eastern end of Fuller Road by the Megginis Arm Tributary and consists of 26 acres of land.

The property was purchased in April 1999.

In May 2010, The Florida Water Management District completed a large stormwater pond at this location that offers the opportunity for a recreational/educational trail and other amenities in accordance with a grant agreement with the Florida Communities Trust program.

The process of establishing beneficial wetland vegetation within the pond and the control of invasive species is now ongoing. All improvements made to the area must be in accordance with the Okeehoopkee Prairie Management Plan.

Proposed Improvements

Expand greenways hub near Lake Jackson and provide expanded passive recreational opportunities. Protect on-site archaeological resources.

Improvements will include interpretative centers related to the historical and lake resources of the project area. Provide space to construct and manage a stormwater treatment facility, thereby meeting water quality improvement objectives for Lake Jackson. This project is to build a passive park on the property