



Leon County
Public Works Department
Engineering Services Division
"People Focused. Performance Driven."

Rhodes Cemetery Road Improvements

Project Details

Consultant

- DRMP

Progress

- Design Completed by 5-11-2012; Construction Completed by 11-13-2012 (Peavy & Son for \$119,955.76)

Cost

- \$57,437.71

Project Schedule

Open House – Project Design Update

Date: Tuesday, March 27, 2012

Time: 6:00 PM – 7:30 PM

Place: Woodville Community Center

8000 Old Woodville Highway

Tallahassee, FL 32305

Contact Information

George Su, P.E.

Senior Design Engineer

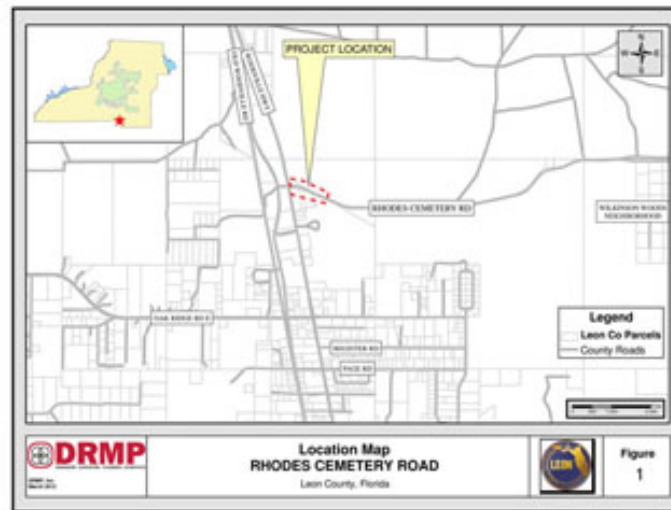
2280 Miccosukee Road,

Tallahassee, FL 32308

Email: SuShin@leoncountyfl.gov

Phone: 8506061544

Fax: 8506061501



Project Description

Rhodes Cemetery Road has a history of flooding on the west end of the road near the intersection with Woodville Highway. This road serves as the only entry and exit point for residents that live along the road and residents in the Wilkinson Woods Neighborhood.

Currently, the Rhodes Cemetery Road slopes down toward east from Woodville Highway and reaches a low point approximately 300 feet east of the intersection.

During big storm events, the Rhodes Cemetery Road near the low point was overtopped which rendered a safety and accessibility problem.

Proposed Improvements

In order to enhance the safety and accessibility, Rhodes Cemetery Road will be raised by 1.8 feet at this location from the low elevation of 21.8 NGVD29 to an average elevation of 23.6 NGVD29.

Traffic control measures will be set up to provide one-lane traffic during construction hours, and both lanes will be open back to two way traffic at the end of each day.



Leon County
Public Works Department
Engineering Services Division
"People Focused. Performance Driven."

Rhodes Cemetery Road Improvements

--	--