



LIVING OUR "PEOPLE FOCUSED, PERFORMANCE DRIVEN" CULTURE



County Administration
Alan Rosenzweig
Deputy County Administrator
(850) 606-5300
RosenzweigA@LeonCountyFL.gov



County Administration
Kim Dressel
Leon LEADS
(850) 606-5300
DresselK@LeonCountyFL.gov



County Administration
Shington Lamy
Assistant to the County Administrator
(850) 606-5300
LamyS@LeonCountyFL.gov



Emergency Medical Services
Tom Quillin
Chief
(850) 606-2100
QuillinT@LeonCountyFL.gov



LeRoy Collins Leon County Public Library System
Cay Hohmeister
Director
(850) 606-2665
HohmeisterC@LeonCountyFL.gov



Animal Control
Andrew Seltz
Director
(850) 606-5400
SeltzA@LeonCountyFL.gov



Emergency Management
Kevin Peters
Director
(850) 488-5921
PetersK@LeonCountyFL.gov



Office of Economic Development & Business Partnerships
Ken Morris
Director
(850) 606-5300
MorrisK@LeonCountyFL.gov



Office of Economic Development & Business Partnerships
Cristina L. Paredes
Intergovernmental Affairs & Special Projects Coordinator
(850) 606-5300
ParedesC@LeonCountyFL.gov



Office of Economic Development & Business Partnerships
Don Lanham
Grants Coordinator
(850) 606-5300
LanhamD@LeonCountyFL.gov



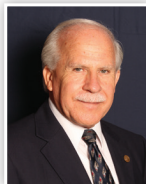
M/WSBE
Shanea Wilks
Division Director
(850) 606-1650
WilksS@LeonCountyFL.gov



Tourism Development
Lee Daniel
Director
(850) 606-2300
DaniLee@LeonCountyFL.gov



Public Works & Community Development
Tony Park
Director
(850) 606-1500
ParkT@LeonCountyFL.gov



Public Works Operations
Dale Walker
Division Director
(850) 606-1400
WalkerDa@LeonCountyFL.gov



Public Works Engineering Services
Kathy Burke
Division Director
(850) 606-1500
BurkeK@LeonCountyFL.gov



Public Works Parks & Recreation
Leigh Davis
Division Director
(850) 606-1470
DavisLe@LeonCountyFL.gov



Public Works Fleet Management
John Pompey
Division Director
(850) 606-2000
PompeyJ@LeonCountyFL.gov



Facilities
Tom Brantley
Director
(850) 606-5000
BrantleyT@LeonCountyFL.gov



DSEM
David McDevitt
Director
(850) 606-1300
McDevittD@LeonCountyFL.gov



DSEM Development Services
Ryan Culpepper
Division Director
(850) 606-1300
CulpepperR@LeonCountyFL.gov



DSEM Building Review & Inspection
Ed Jarriel
Division Director
(850) 606-1300
JarrielE@LeonCountyFL.gov



DSEM Environmental Services
John Krainak
Division Director
(850) 606-1300
KrainakJ@LeonCountyFL.gov



DSEM Permit & Compliance Services
Emma Smith
Division Director
(850) 606-1300
SmithE@LeonCountyFL.gov

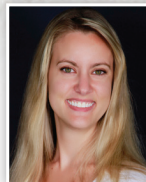


Department of P.L.A.C.E.
Wayne Tedder
Director
(850) 891-6400
Wayne.Tedder@Tal.gov.com

A CORE PRACTICE OF LEON COUNTY GOVERNMENT



Department of P.L.A.C.E,
Blueprint 2000
Charles Hargraves
Blueprint 2000 Manager
(850) 219-1060
Charles.Hargraves@BluePrint2000.org



Office of Resource Stewardship
Maggie Theriot
Director
(850) 606-5300
TheriotM@LeonCountyFL.gov



Solid Waste Management
Robert Mills
Division Director
(850) 606-1800
MillsR@LeonCountyFL.gov



Cooperative Extension
Kendra Zamojski
Division Director
(850) 606-5200
ZamojskiK@LeonCountyFL.gov



Office of Human Services &
Coommunity Partnerships
Candice M. Wilson
Director
(850) 606-1900
WilsonCa@LeonCountyFL.gov



Volunteer Services
Jeri Bush
Division Director
(850) 606-1970
BushJ@LeonCountyFL.gov



Veteran Services
Jan Carey
Division Director
(850) 606-1940
CareyJ@LeonCountyFL.gov



Housing Services
Lamarr Kemp
Division Director
(850) 606-1900
KempL@LeonCountyFL.gov



Human Resources
Lillian Bennett
Director
(850) 606-2400
BennettL@LeonCountyFL.gov



MIS
Pat Curtis
Director
(850) 606-5500
CurtisP@LeonCountyFL.gov



MIS
Hermon Davis
Public Safety Applications Manager
(850) 606-5500
DavisH@LeonCountyFL.gov



MIS
Michelle Taylor
Information Telecommunications & Technology Manager
(850) 606-5500
TaylorM@LeonCountyFL.gov



MIS
Teasha Williams
Applications & Database Manager
(850) 606-5500
WilliamsT@LeonCountyFL.gov



GIS
Scott Weisman
Director
(850) 606-5504
WeismanS@LeonCountyFL.gov



Community & Media Relations
Jon D. Brown
Director
(850) 606-5300
BrownJon@LeonCountyFL.gov



Office of Intervention &
Detention Alternatives
Wanda Hunter
Director
(850) 606-5600
HunterW@LeonCountyFL.gov



Office of Financial Stewardship
Scott Ross
Director
(850) 606-5100
RossS@LeonCountyFL.gov



Purchasing
Shelly Kelley
Division Director
(850) 606-1600
KelleyS@LeonCountyFL.gov



Risk Management
Karen Melton
Risk Manager
(850) 606-5100
HarrellK@LeonCountyFL.gov



Did You Know
Leon County has a ratio
of 6.0 employees for every
thousand County residents.



Well-Being Team

Employing Team Approach

A Core Practice of Leon County Government

Employees work together to produce bigger and better ideas to seize the opportunities and to address the problems which face our community.