



**Leon County
Public Works Department
Engineering Services Division**
"People Focused. Performance Driven."

Comprehensive Wastewater Treatment Facilities Plan

Design Details

Consultant

- Jim Stidham & Associates, Inc.

Progress

-

Cost

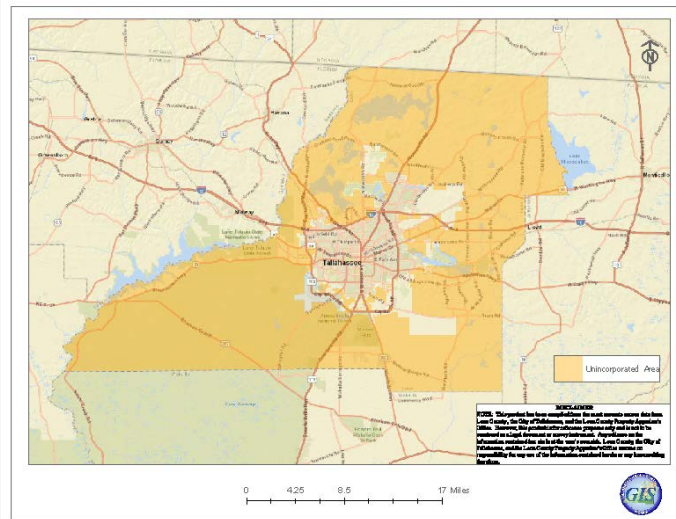
-

Project Schedule

Contact Information

Theresa Heiker, P.E.
Project Manager
2280 Miccosukee Road
Email: heikert@leoncountyfl.gov
Phone: (850)606-1526
Fax: (850)606-1501

Felton Ard, P.E.
Customer Support Engineer
2280 Miccosukee Road
Email: ArdF@leoncountyfl.gov
Phone: (850) 606-1515
Fax: (850) 606-1501



Project Description

The Comprehensive Wastewater Treatment Facilities Plan and the Wastewater Treatment Feasibility Analysis will evaluate wastewater management alternatives to traditional septic systems, also known as onsite sewage treatment and disposal systems (OSTDS) in order to reduce nitrogen entering the groundwater. The alternatives to receive the greatest considerations are advanced treatment OSTDS, cluster systems providing advanced treatment levels, and central sanitary sewer connection.

Proposed Improvements

The final documents will include technology assessment, mapping of recommended project construction, assessment of financial impacts to Leon County government and property owners, and minutes of public hearings on both the technology assessment and the recommended alternatives.