



Leon County
Public Works Department
Engineering Services Division
"People Focused. Performance Driven."

Gearhart Road Sidewalk from CSX Railroad to Capital Circle

Design Details

Consultant

- DRMP

Progress

- final permitting July 2019

Cost

-

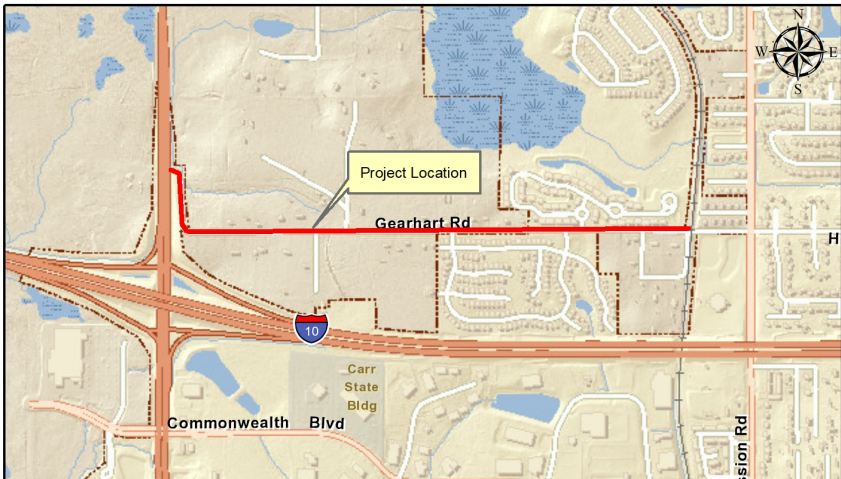
Project Schedule

Construction planned to begin
Summer of 2019

Contact Information

Kimberly Wood, P.E.
Project Manager
2280 Miccosukee Road
Tallahassee, FL 32308
Email: WoodK@leoncountyfl.gov
Phone: (850) 606-1545
Fax: (850) 606-1501

Felton Ard, P.E.
Customer Support Engineer
2280 Miccosukee Road
Tallahassee, FL 32308
Email: ArdF@leoncountyfl.gov
Phone: (850) 606-1515
Fax: (850) 606-1501



Project Description

Installation of a sidewalk along Gearhart Road from Capital Circle to Mission Road. Sidewalk has been installed from Mission Road through the CSX Railroad. The remaining sidewalk section is currently in permitting. Sidewalk will be installed along the south and west side of Gearhart Road

Proposed Improvements

Improvements include adding a 5 to 6 foot sidewalk along the roadway and includes minor drainage improvements, including but not limited to curb and gutter and curb inlets.