



Leon County
Public Works Department
Engineering Services Division
"People Focused. Performance Driven."

Fords Arm South Drainage Improvements

Design Details

Consultant

- Atkins

Progress

- Underway

Cost

- \$249,000.00

Project Schedule

Contact Information

Theresa Heiker, P.E.

Project Manager

2280 Miccosukee Road

Tallahassee, FL 32308

Email: HeikerT@leoncountyfl.gov

Phone: (850) 606-1526

Fax: (850) 606-1501

Felton Ard, P.E.

Customer Support Engineer

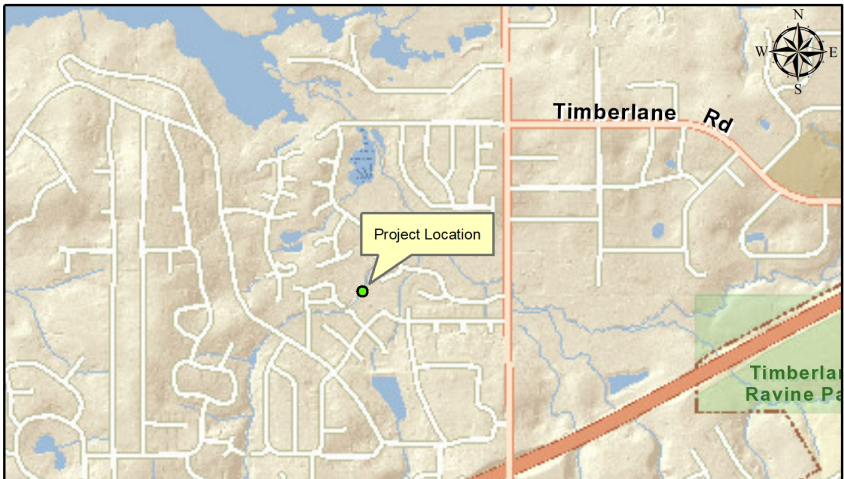
2280 Miccosukee Road

Tallahassee, FL 32308

Email: ArdF@leoncountyfl.gov

Phone: (850) 606-1515

Fax: (850) 606-1501



Project Description

This project addresses channel erosion along the Fords Arm Tributary and roadway overtopping at Timberlane Road, west of Meridian Road.

Proposed Improvements

The multiple culverts in the low area west of Meridian Road on Timberlane Road will be replaced with a box culvert to protect Timberlane Road from overtopping during intense storm events. Channel stabilization will be constructed upstream to reduce erosion and sediment transport into Fords Arm of Lake Jackson.