



Leon County
Public Works Department
Engineering Services Division
"People Focused. Performance Driven."

Pedrick Pond Littoral Planting

Construction Details

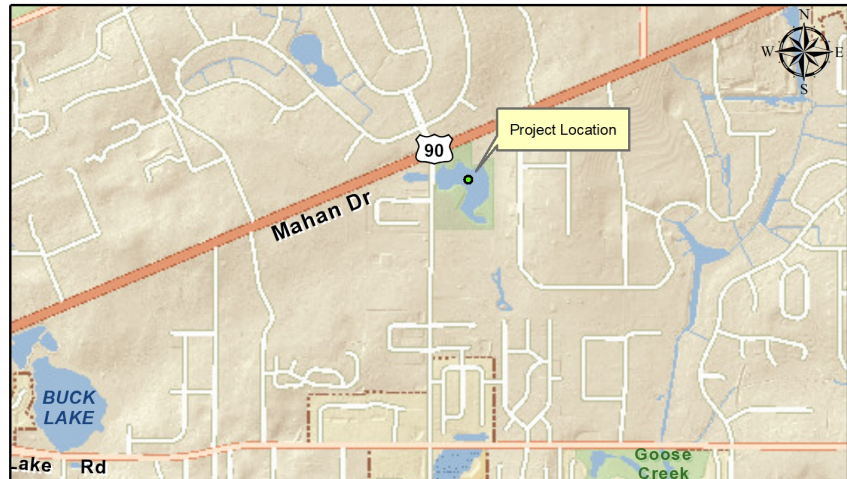
- Consultant
- Persica Landscaping
- Progress
- Underway
- Cost
- \$20,000.00

Project Schedule

Contact Information

Theresa Heiker, P.E.
Project Manager
2280 Miccosukee Road
Tallahassee, FL 32308
Email: HeikerT@leoncountyfl.gov
Phone: (850) 606-1526
Fax: (850) 606-1501

Felton Ard, P.E.
Customer Support Engineer
2280 Miccosukee Road
Tallahassee, FL 32308
Email: ArdF@leoncountyfl.gov
Phone: (850) 606-1515
Fax: (850) 606-1501



Project Description

The project is located at the Pedrick Pond, at the intersection of Pedrick Road and Mahan Drive. The stormwater facility permit required the placement of wetland plants around the pond perimeter.

Proposed Improvements

Wetland trees, shrubs and herbaceous plants will be placed around the water's edge to assist in the treatment of stormwater runoff at the facility.