



Leon County
Public Works Department
Engineering Services Division
"People Focused. Performance Driven."

Dempsey Mayo Road Extension North

Design Details

Consultant

- GPI

Progress

- 60% Design

Cost

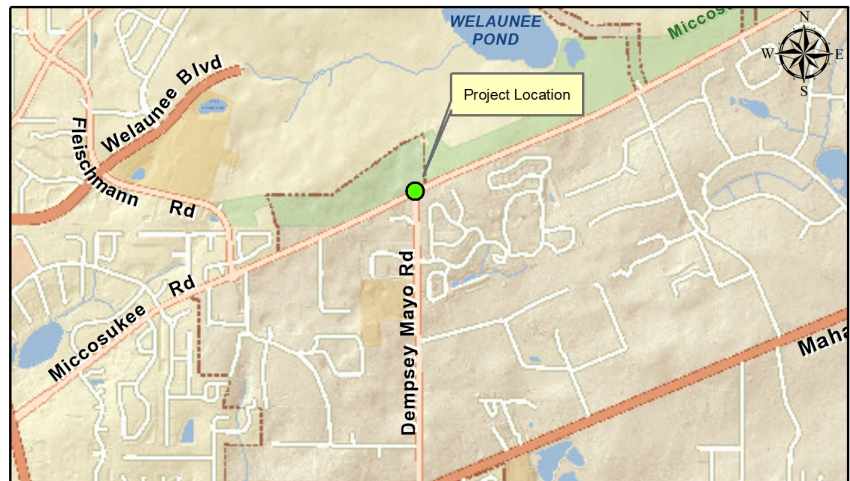
-

Project Schedule

Contact Information

Kimberly Wood, P.E.
Project Manager
2280 Miccosukee Road
Tallahassee, FL 32308
Email: WoodK@leoncountyfl.gov
Phone: (850) 606-1545
Fax: (850) 606-1501

Felton Ard, P.E.
Customer Support Engineer
2280 Miccosukee Road
Tallahassee, FL 32308
Email: ArdF@leoncountyfl.gov
Phone: (850) 606-1515
Fax: (850) 606-1501



Project Description

This is a Development initiated project. The extension of Dempsey Mayo Road is a result of the Canopy Development within the City of Tallahassee.

Proposed Improvements

The improvements include the installation of a new intersection at Miccosukee Road and Dempsey Mayo Road. The developer's engineer is evaluating the benefits of a roundabout vs a traditional signalized intersection with turn lanes.