



**Leon County**  
**Public Works Department**  
**Engineering Services Division**  
*"People Focused. Performance Driven."*

## Smith Creek Bike Lanes

### Design Details

Consultant

- TBD

Progress

- Design Consultant Selection

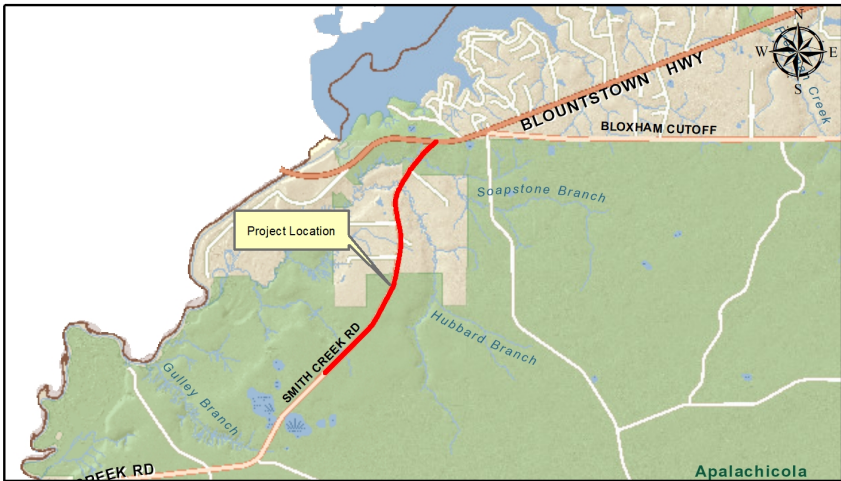
Cost

- 

### Project Schedule

### Contact Information

Felton Ard, P.E.  
Project Manager  
2280 Miccosukee Road  
Tallahassee, FL 32308  
Email: [ArdF@leoncountyfl.gov](mailto:ArdF@leoncountyfl.gov)  
Phone: (850) 606-1515  
Fax: (850) 606-1501



### Project Description

The purpose of the project is to construct two five foot wide bicycle lanes to Smith Creek Road (CR 375). The length of the project is 2.3 miles and will enhance and promote the safe use of non-motorized transportation alternatives to access the Apalachicola National Forest

### Proposed Improvements