



Leon County
Public Works Department
Engineering Services Division
"People Focused. Performance Driven."

Chaires Cross Road Sidewalk - Chaires School and Capitola Road

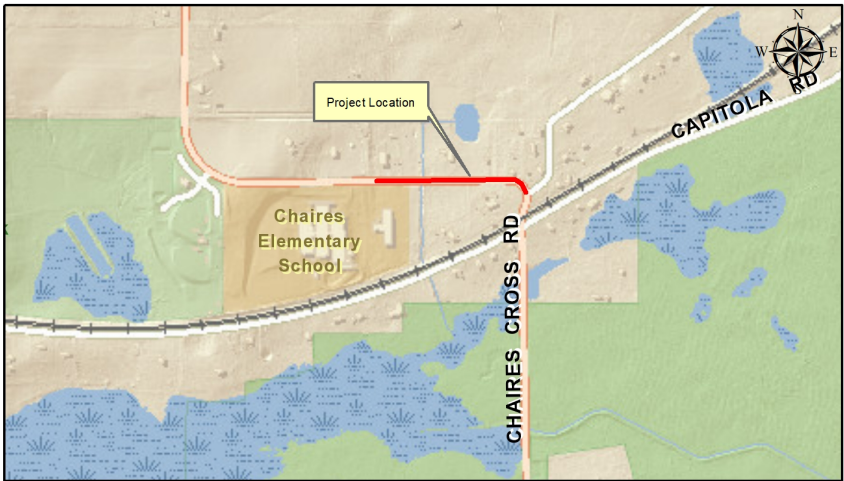
Design Details

- Consultant
- SNC Lavalin - Atkins
- Progress
- 30% Plans
- Cost
-

Project Schedule

Contact Information

Felton Ard, P.E.
Project Manager
2280 Miccosukee Road
Tallahassee, FL 32308
Email: ArdF@leoncountyfl.gov
Phone: (850) 606-1515
Fax: (850) 606-1501



Project Description

Construction of a Safe Routes to School Sidewalk along the north shoulder of Chaires Road between the school property and the CSX Railroad right of way

Proposed Improvements