



Leon County
Public Works Department
Engineering Services Division
"People Focused. Performance Driven."

Tram Road St. Marks River Cross Drain Replacement

Construction Details

Consultant

- CDM Smith

Progress

- Bidding Process

Cost

- \$930,000.00

Project Schedule

Construction Bid will be advertised shortly.

Contact Information

S. George Su, P.E.

Project Manager

2280 Miccosukee Road

Tallahassee, FL 32308

Email: SuShin@leoncountyfl.gov

Phone: (850) 606-1544

Fax: (850) 606-1501

Felton Ard, P.E.

Customer Support Engineer

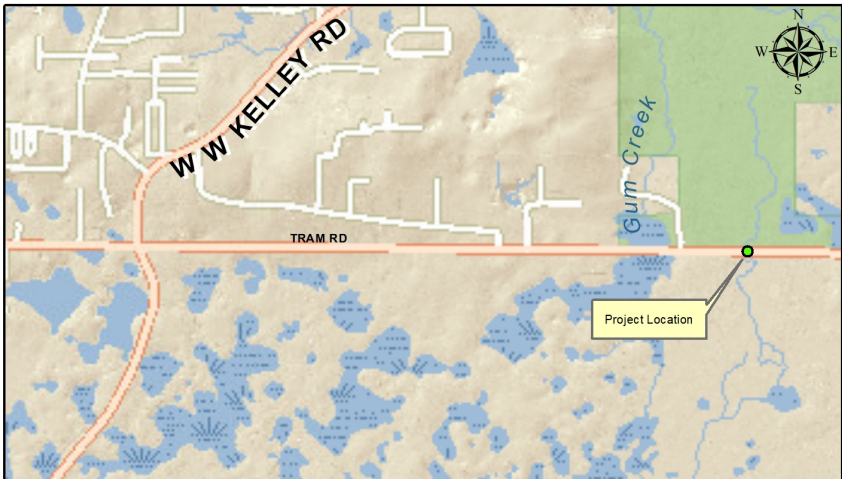
2280 Miccosukee Road

Tallahassee, FL 32308

Email: ArdF@leoncountyfl.gov

Phone: (850) 606-1515

Fax: (850) 606-1501



Project Description

Replace existing system of corrugated metal pipes (CMP) with an equivalent system using concrete box culverts.

The system of ten (10) CMP's are showing signs of advanced deterioration of the metal pipe and concrete end protection resulting in increased maintenance and safety issues. The proposed culvert replacement with concrete box culverts will insure along lasting crossdrain system to this vital roadway.

Proposed Improvements

- Improved crossdrain system
- Stabilized shoulder at crossdrains
- Guardrail protection system

The proposed improvements include a triple 8-foot by 4-foot concrete box culvert with an upstream flowline of Elevation 27.8 feet and matching the existing roadway profile.