



Leon County
Public Works Department
Engineering Services Division
"People Focused. Performance Driven."

Baum Road Drainage Improvement

Design Details

Consultant

- Moore Bass

Progress

- Feasibility Study

Cost

-

Project Schedule

Contact Information

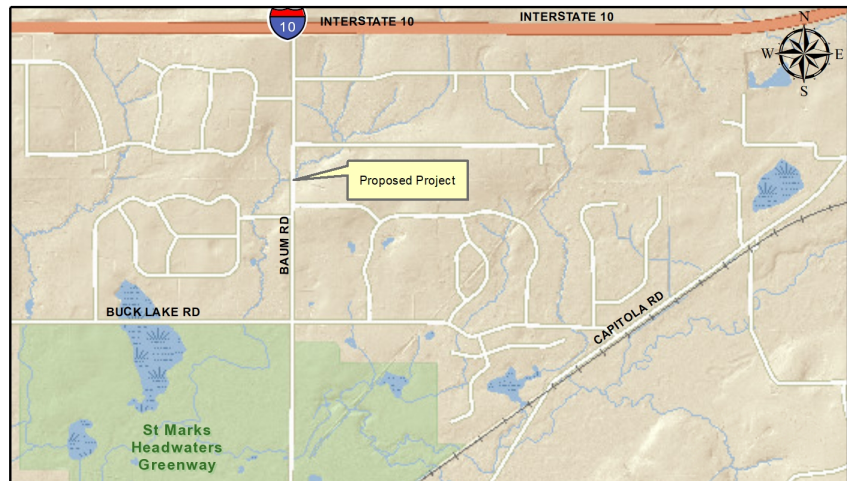
Chris Muehlemann, P.E.
Project Manager
2280 Miccosukee Road
Tallahassee, FL 32308
Email:

Muehlemann@leoncountyfl.gov

Phone: (850) 606-1536

Fax: (850) 606-1501

Felton Ard, P.E.
Customer Support Engineer
2280 Miccosukee Road
Tallahassee, FL 32308
Email: Ardf@leoncountyfl.gov
Phone: (850) 606-1515
Fax: (850) 606-1501



Project Description

This project is for drainage improvements and wetland mitigation to reduce the flooding of Baum Road and associated stream erosion.

This project is proposed in three stages that include:

- (1) A feasibility study with community input.
- (2) Design and permitting
- (3) Construction

Proposed Improvements

The drainage way through Winfield Forest subdivision remained natural during the subdivision development. Uphill development north of Winfield Forest on both sides of Baum Road, including I-10, generates increased flows, which overwhelm the Baum Road cross-drain during heavy storms. The feasibility analysis will identify drainage structural improvements from Buck Lake Road north through Winfield Forest and Baum Road. Associated wetland mitigation requirements will be determined.

Improving the conveyance will allow compliance with Stormwater Management Policy 1.5.2: No floodwater in the driving lanes of any roadways for a 5-year storm.