



Leon County
Public Works Department
Engineering Services Division
"People Focused. Performance Driven."

St, Marks Headwaters Greenway, Phase II

Design Details

Consultant

- Rigiste Sliger, Inc.

Progress

- 30%

Cost

-

Project Schedule

Contact Information

Chris Muehlemann, P.E.

Project Manager

2280 Miccosukee Road
Tallahassee, FL 32308

Email:

Muehlemannc@leoncountyfl.gov

Phone: (850) 606-1536

Fax: (850) 606-1501

Felton Ard, P.E.

Customer Support Engineer

2280 Miccosukee Road
Tallahassee, FL 32308

Email: Ardf@leoncountyfl.gov

Phone: (850) 606-1515

Fax: (850) 606-1501

Leigh Davis

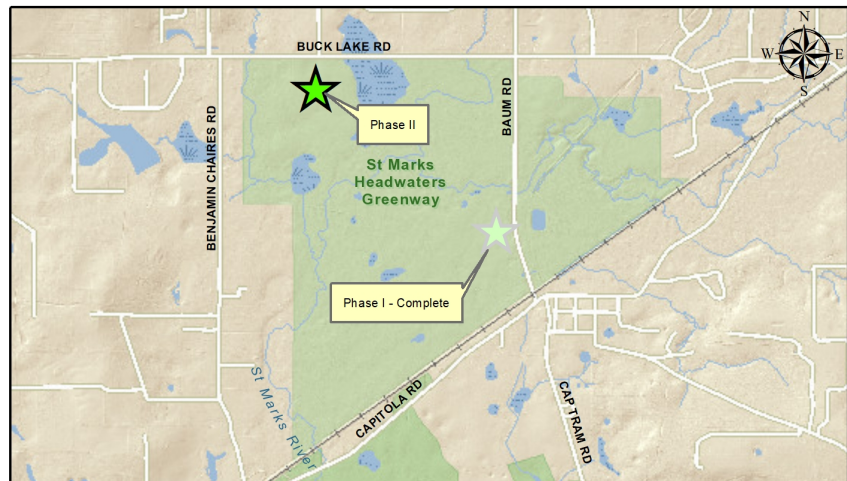
Director of Parks & Recreation

1907 S. Monroe St. Tallahassee,
FL 32301

Email: Davisle@leoncountyfl.gov

Phone: (850) 606-1475

Fax: (850) 606-1471



Project Description

The proposed improvements for phase II of the St, Marks Headwaters Greenway consists of the large trail head on Buck Lake Road with paved parking, a permanent restroom facility, playground, and trails with three spans of boardwalk and an observation platform. This is a continuation of phase I which constructed a trail head on Baum Road with pervious pavement parking, picnic shelters, information kiosk, horse trailer parking and 3 miles of trails.

Proposed Improvements