



**Leon County
Public Works Department
Engineering Services Division**
"People Focused. Performance Driven."

Miccosukee Greenway Trail Improvements - Phase II

Project Details

Consultant

-

Progress

-

Cost

-

Project Schedule

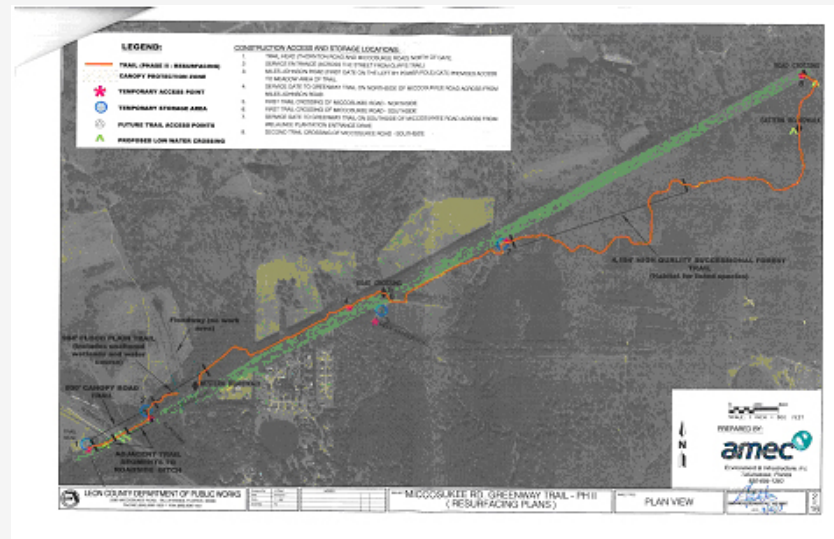
Construction will begin Nov. 18, 2013, and closure of the trail will be required to ensure safety of workers on the project and users of the facility. The closure will be in effect from November 18, 2013 through March 2014.

Contact Information

Leigh Davis
Director of Parks and Recreation
2280 Miccosukee Road,
Tallahassee, FL 32308
Email: DavisLe@leoncountyfl.gov
Phone: 8506061475
Fax: 8506061471

Jack Davis, Sr.
Principal Scientist
2533 Greer Road, Tallahassee, FL 32308
Email: jack.davis@amec.com
Phone: 8506561293
Fax: 8506563386

Larry "Bear" Schenk
ASLA, CA, Senior Park Planner
2533 Greer Road, Tallahassee, FL 32308
Email: sunbear333@aol.com
Phone: 8506561293
Fax: 8506563386



Project Description

Proposed Improvements

This project is a continuation of the existing, crushed shell trail that runs between Edenfield trail head and Thornton Road trail head, which was Phase I. (Phase I construction was completed in June of 2011.) Improvements for Phase II will include erosion repairs and control measures, stabilization of the trail surface, and additional safety measures added to the eastern boardwalk.

The approximate length of the trail to be improved is 3.4 miles and runs between the Thornton Road trail head and an area just west of Argyle Lane. Closure of this segment of trail will be required for the duration of the renovation project. The County will be constructing an 8 to 12 foot wide trail with a uniform pervious surface that will be topped with crushed shell product available from a local coastal mine.

The 8 to 12 foot width trail will not require the removal of any trees, and improvements are being made within the existing trail footprint.