



Leon County
Public Works Department
Engineering Services Division
"People Focused. Performance Driven."

Magnolia Drive Multi-Use Trail

Project Details

Consultant

-

Progress

-

Cost

-

Project Schedule

Contact Information

Chris Muehlemann, P.E.

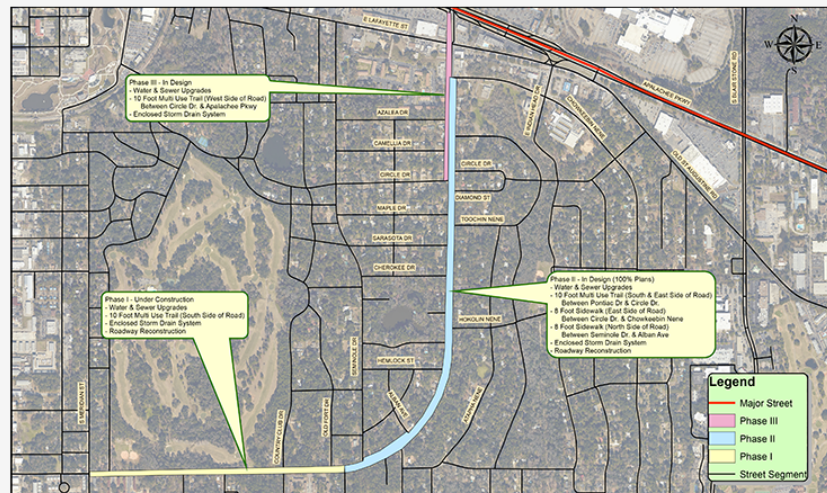
Contact

Leon County Public Works, 2280
Miccosukee Road, Tallahassee, FL
32308

Email:

muehlemannc@leoncountyfl.gov

Phone: 8506061536



Magnolia Drive Multi Use Trail - Phase Map

Project Description

The Project is located in the southeastern section of Leon County on Magnolia Drive between

South Meridian Street and Apalachee Parkway.

Proposed Improvements

Phase I (S. Meridian Street to Pontiac Drive)

- Roadway Reconstruction
- 10 Foot Multi Use Path on south side of roadway
- Potable Water and Sanitary Sewer System upgrade
- Enclosed stormwater drainage system on south side of roadway

Phase II (Pontiac Drive to Chowkeebin Nene)

- Roadway Reconstruction
- 10 Foot Multi Use Trail on south and east side of roadway
- 8 Foot sidewalk between Seminole Dr. and Alban Ave.
- 8 Foot sidewalk between Circle Dr. and Chowkeebin Nene
- Potable Water and Sanitary Sewer upgrade



Leon County
Public Works Department
Engineering Services Division
"People Focused. Performance Driven."

Magnolia Drive Multi-Use Trail

- Enclosed stormwater drainage system on south and east side of roadway
- Center median refuge island for Magnolia Drive crosswalk at Chowkeebin Nene

Phase III (Circle Drive to Apalachee Parkway)

- Roadway Reconstruction
- 10 Foot Multi Use Trail on west side of roadway
- Enclosed stormwater system on west side of roadway